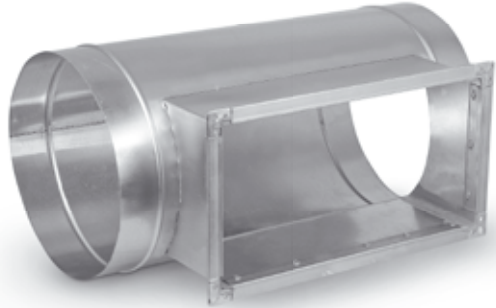
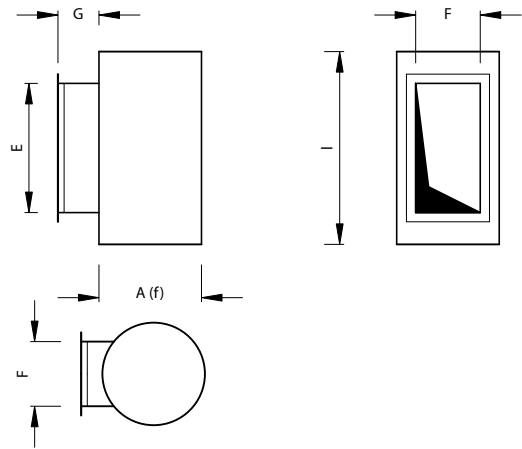


Round Duct Take-Off

TR6



Dimensions

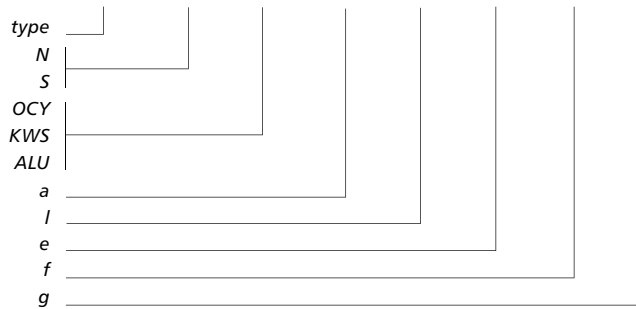


Description

The take-off is used to join rectangular with round ducts. On its one end it has a cover end with sheet metal joining profiles or a turned-up flange. Turn-ups for sheet screwing are usually provided on the side where the round duct is connected. The complete T-piece can also be ordered with a round duct.

Example identification

product code **TR6 - N - OCY - 630 - 500 - 250 × 400 - 60**



- N low pressure
- S medium pressure
- OCY galvanised material
- KWS acid-proof material
- ALU aluminium material
- a duct diameter
- l round duct length

- e outlet length
- f outlet width
- g outlet height

The components are usually fabricated with standard dimensions, and there is no need to specify them.