

T-pieces

TPC/XPC

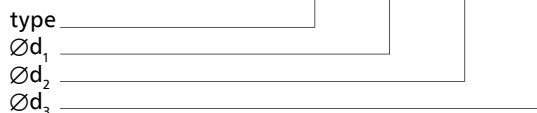


Description

TPC – t-piece built with SP saddle, without gasket.
 XPC – x-piece built with SP saddles, without gasket $\varnothing d_4$
 may differ from $\varnothing d_3$

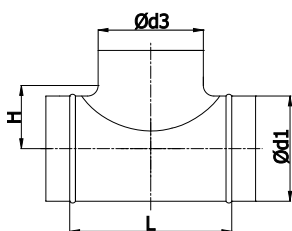
Example identification

Product code: TPC - aaa - bbb - ccc

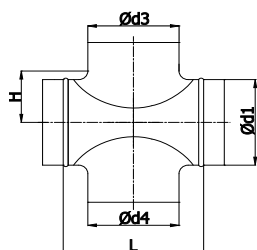


Dimensions

TPC



XPC



Dimensions

$\varnothing d_1$ [mm]	$\varnothing d_2/\varnothing d_4$ [mm]	L [mm]	H [mm]	TPC weight [kg]	XPC weight [kg]
80	80 ¹	140	52	0,25	0,35
100	80 ¹	126	65	0,30	0,50
	100 ²	151	65	0,40	0,60
125	80 ¹	146	75	0,36	0,50
	100 ³	184	78	0,46	0,70
	125 ¹	184	83	0,58	0,85
140	80 ¹	140	82	0,38	0,50
	100 ¹	175	85	0,50	0,74
	125 ¹	230	90	0,65	0,96
	150 ¹	260	95	0,70	1,02
150	80 ¹	140	87	0,42	0,52
	100 ¹	175	90	0,55	0,75
	125 ¹	215	95	0,68	0,98
	140 ⁴	230	95	0,70	0,99
	150 ¹	260	95	0,70	1,02
160	80 ¹	140	92	0,44	0,56
	100 ¹	184	95	0,55	0,82
	125 ³	229	100	0,68	1,05
	140 ⁴	230	100	0,75	1,07
180	150 ⁴	260	100	0,75	1,09
	160 ¹	229	105	0,80	1,15
	80 ¹	140	102	0,50	0,60
	100 ¹	175	105	0,65	0,85
125 ¹	215	110	0,77	1,08	
	140 ⁴	230	110	0,80	1,10
	150 ⁴	260	110	0,80	1,12
160 ¹	260	115	0,92	1,14	

T-pieces

TPC/XPC

Dimensions

$\varnothing d_1$ [mm]	$\varnothing d_3/\varnothing d_4$ [mm]	L [mm]	H [mm]	TPC weight [kg]	XPC
180	180 ⁴	285	115	1,06	1,45
200	80 ¹	140	112	0,55	0,66
	100 ¹	175	115	0,65	0,92
	125 ³	215	115	0,79	1,17
	140 ⁴	230	120	0,83	1,20
	150 ³	260	120	0,88	1,23
	160 ³	281	125	0,95	1,45
	180 ⁴	285	125	1,15	1,64
	200 ¹	281	125	1,25	1,70
224	80 ¹	140	124	0,60	0,70
	100 ¹	175	127	0,78	0,98
	125 ¹	215	132	0,90	1,15
	140 ⁴	230	132	0,98	1,34
	150 ⁴	260	132	0,98	1,36
	160 ¹	260	137	1,00	1,55
	180 ⁴	285	137	1,20	1,74
	200 ¹	346	137	1,25	1,83
	224 ⁴	346	137	1,46	2,06
250	80 ¹	156	137	0,73	0,96
	100 ¹	175	140	0,83	1,17
	125 ¹	220	145	0,90	1,27
	140 ⁴	230	145	1,12	1,50
	150 ⁴	255	145	1,12	1,53
	160 ³	256	150	1,19	1,70
	180 ⁴	306	150	1,40	2,00
	200 ¹	306	150	1,40	2,05
	224 ⁴	350	150	1,60	2,40
	250 ¹	307	150	1,77	2,50
280	80 ⁴	156	152	0,80	1,15
	100 ⁴	175	155	0,93	1,27
	125 ¹	220	160	1,05	1,40
	140 ⁴	230	160	1,20	1,68
	150 ⁴	255	160	1,20	1,70
	160 ⁴	256	165	1,28	1,84
	180 ⁴	306	165	1,45	2,00
	200 ¹	306	165	1,50	2,05
	224 ⁴	350	165	1,64	2,35
300	80 ⁴	156	162	0,90	1,40
	100 ⁴	175	165	1,00	1,42
	125 ¹	220	170	1,07	1,50
	140 ⁴	230	170	1,25	1,77

$\varnothing d_1$ [mm]	$\varnothing d_3/\varnothing d_4$ [mm]	L [mm]	H [mm]	TPCL weight [kg]	XPCL
300	150 ⁴	255	170	1,25	1,80
	160 ⁴	256	175	1,35	1,98
	180 ⁴	306	175	1,55	2,15
	200 ¹	306	175	1,58	2,20
	224 ⁴	350	175	1,73	2,46
	250 ¹	350	175	1,94	2,60
315	80 ⁴	156	170	1,00	1,41
	100 ⁴	175	173	1,02	1,43
	125 ¹	220	178	1,10	1,53
	140 ⁴	230	178	1,35	1,62
	150 ⁴	250	178	1,35	1,65
	160 ⁴	256	182	1,35	2,00
	180 ⁴	306	182	1,62	2,22
	200 ¹	306	182	1,65	2,26
	224 ⁴	350	182	1,80	2,55
	250 ¹	350	182	1,95	2,67
	315 ¹	390	182	2,80	3,66
355	100 ⁴	175	193	1,32	2,00
	125 ⁴	220	198	1,45	2,10
	160 ⁴	256	203	1,70	2,25
	200 ⁴	306	203	2,10	2,75
	224 ⁴	350	203	2,36	3,10
	250 ⁴	350	203	2,45	3,20
	315 ⁴	455	203	3,10	4,20
400	100 ⁴	175	215	1,80	2,20
	125 ⁴	225	220	1,90	2,40
	160 ⁴	266	225	2,20	2,80
	200 ⁴	300	225	2,60	3,20
	224 ⁴	350	225	2,80	3,60
	250 ⁴	350	225	3,00	3,75
	315 ⁴	415	225	3,55	4,38
	400 ⁴	500	225	4,60	5,90
450	125 ⁴	225	245	2,65	3,30
	160 ⁴	266	250	3,00	3,70
	200 ⁴	300	250	3,50	4,20
	250 ⁴	350	250	4,00	4,80
	315 ⁴	415	250	4,50	5,30
	400 ⁴	500	250	5,60	6,80
500	125 ⁴	225	270	3,00	3,80
	160 ⁴	266	275	3,30	4,10
	200 ⁴	300	275	3,80	4,60

T-pieces

TPC/XPC

Dimensions

$\varnothing d_1$ [mm]	$\varnothing d_2/\varnothing d_4$ [mm]	L [mm]	H [mm]	TPCL weight [kg]	XPCL
500	250	350	275	4,4	5,2
	315	415	275	5,0	5,8
	400	500	275	6,3	7,6
560	200	360	305	4,3	5,7
	250	400	305	4,8	6,3
	315	485	305	5,6	7,2
600	400	590	305	6,9	9,3
	200	360	325	4,5	6,1
	250	400	325	4,9	6,7
630	315	485	325	5,9	7,6
	400	590	325	7,3	9,8
	200	360	340	4,8	6,4
710	250	400	340	5,4	7,0
	315	485	340	6,3	8,2
	400	590	340	7,7	10,2
800	160 ⁴	430	415	5,5	6,0
	200 ⁴	470	415	6,0	6,3
	250 ⁴	520	415	6,6	6,7
	315 ⁴	585	435	7,5	8,0
	400 ⁴	670	435	8,5	9,6
800	450 ⁴	720	475	9,4	10,9
	160 ⁴	430	460	6,2	6,8
	200 ⁴	470	460	6,8	7,5
	250 ⁴	520	460	7,4	8,0
	315 ⁴	585	480	8,4	9,3
	400 ⁴	670	480	9,5	10,5
	450 ⁴	720	520	10,5	11,6
500 ⁴	770	520	11,2	12,0	
560 ⁴	830	520	11,9	13,1	

¹ made of pressed saddles SP

² made of two parts fully pressed

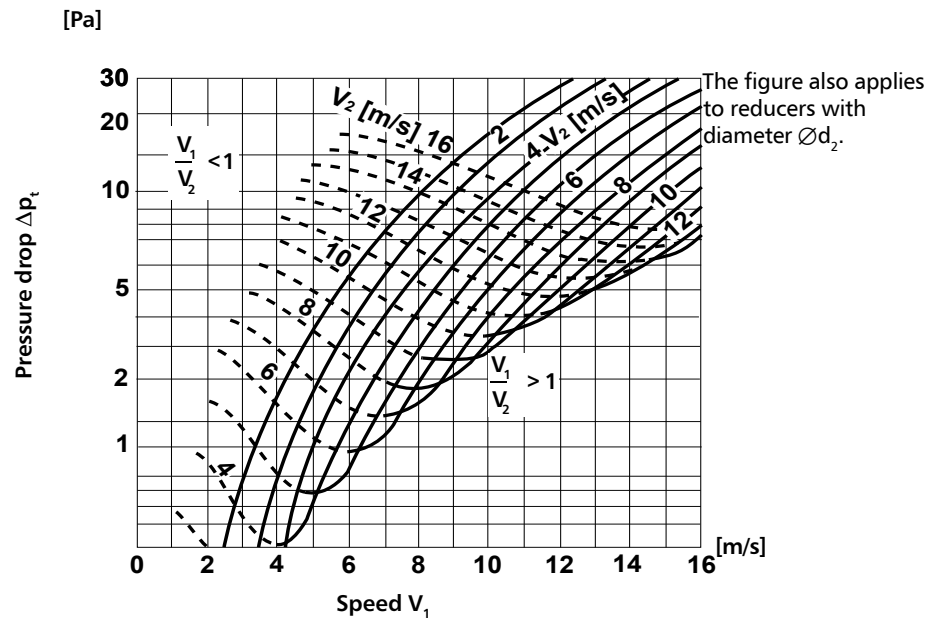
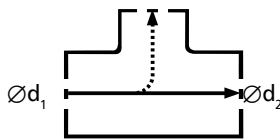
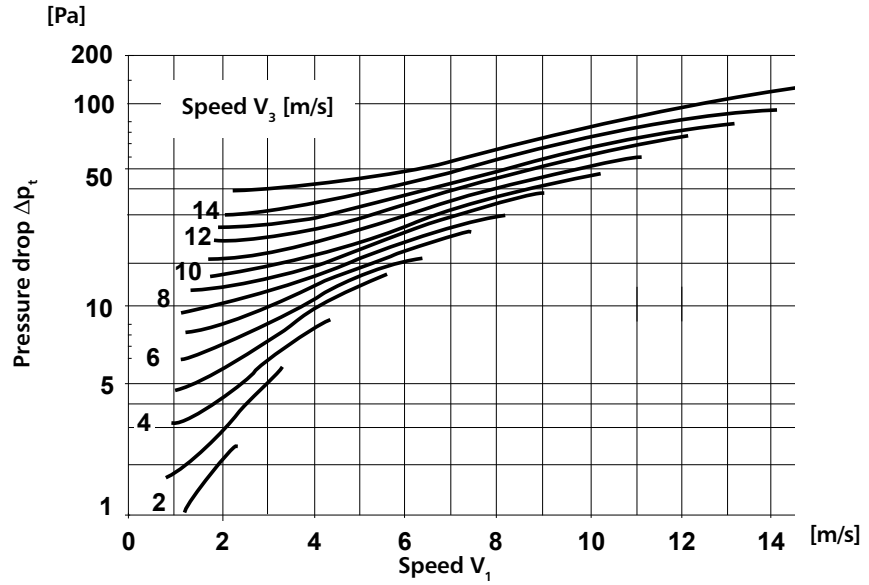
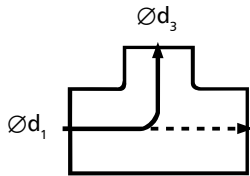
³ made of pressed saddles SPP

⁴ made of segment saddles SPS

T-pieces

TPCL/XPCL/TPC/XPC

Technical Data

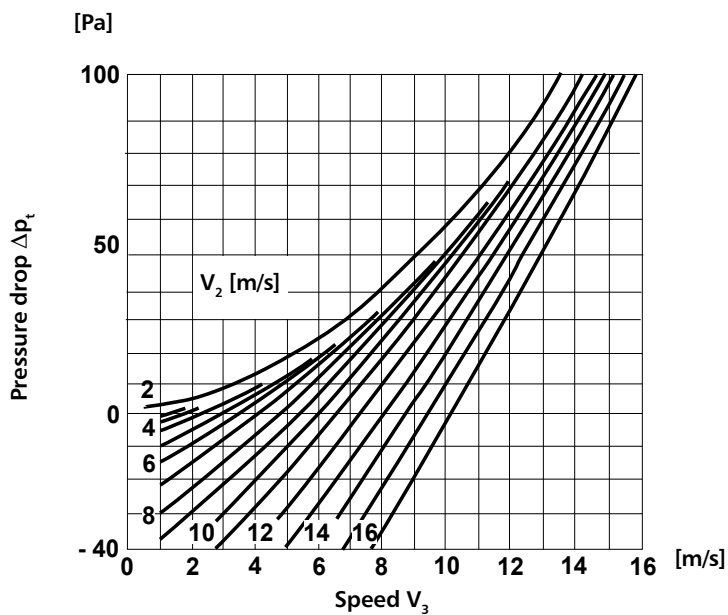
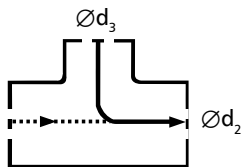
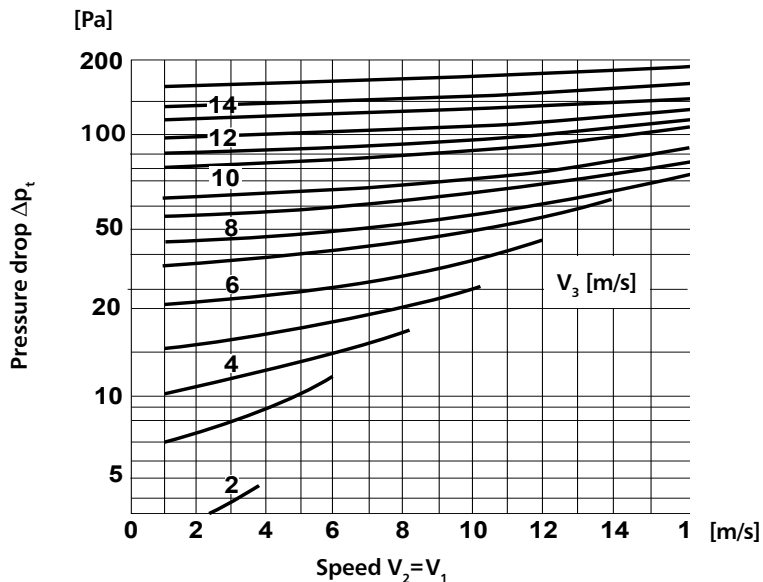
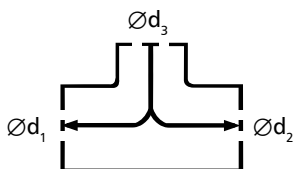


V_1 – average speed in d_1
 V_2 – average speed in d_2
 V_3 – average speed in d_3

T-pieces

TPCL/XPCL/TPC/XPC

Technical Data

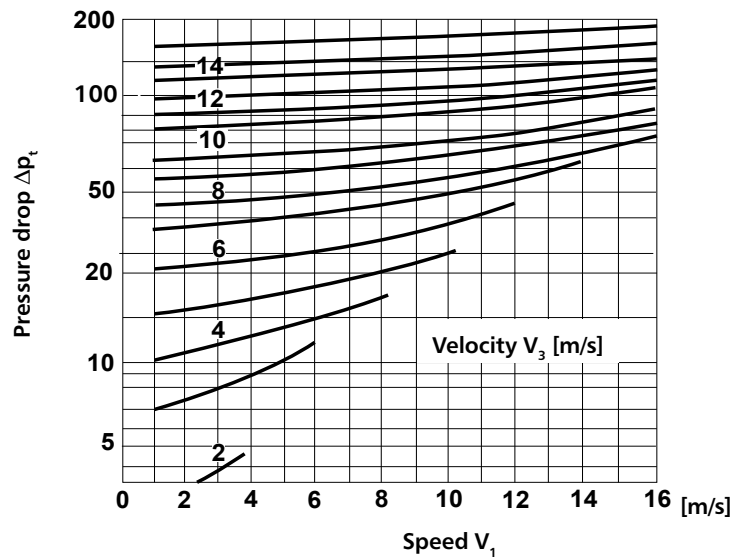
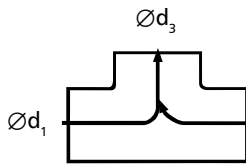
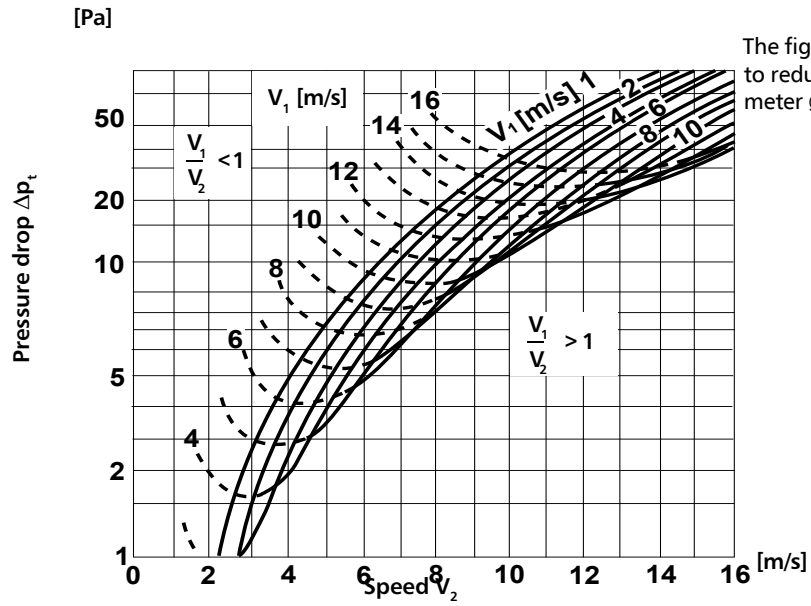
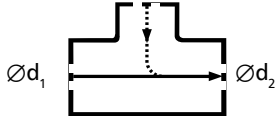


V_1 – average speed in d_1
 V_2 – average speed in d_2
 V_3 – average speed in d_3

T-pieces

TPCL/XPCL/TPC/XPC

Technical Data



V_1 – average speed in d_1
 V_2 – average speed in d_2
 V_3 – average speed in d_3